

Features

Toothpick HD and Whoop HD 2 in 1 combo (Default Comes in Toothpick HD style)
Toothpick style compatible both 2.5inch or 3inch propellers
New design EX1203 High efficiency brushless motors
Caddx baby Turtle provide 1080P 60FPS DVR video
Camera Angle adjustable
Full range receiver options
Buzzer ready
Smooth and powerful
Compatible both for 2s-3s Lipo/LiHV

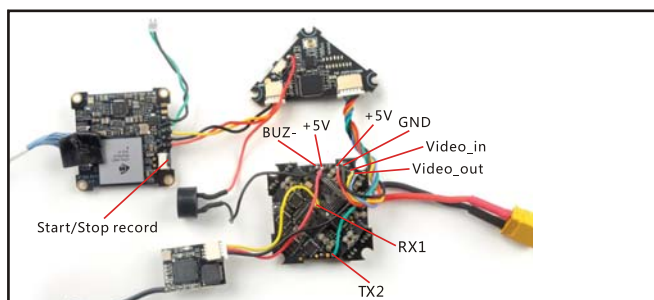
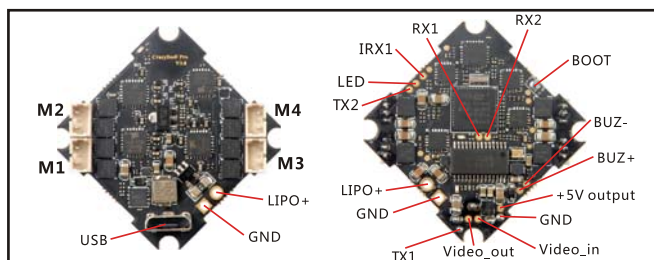
Specifications

Brand Name: Happymodel
Item Name: Larva-X HD Micro FPV brushless Drone
Wheelbase: 125mm
Size: 105mm*105mm*35mm(without propellers)
Weight: Toothpick style ductless 63g (without battery)
Whoop style ducted 79g (without battery)
Receiver options:
Frsky SPI receiver
Flysky SPI receiver
DSM2/DSMX compatible receiver
Frsky XM+ receiver
Frsky R-XSR receiver
TBS Nano CRSF receiver

Package includes

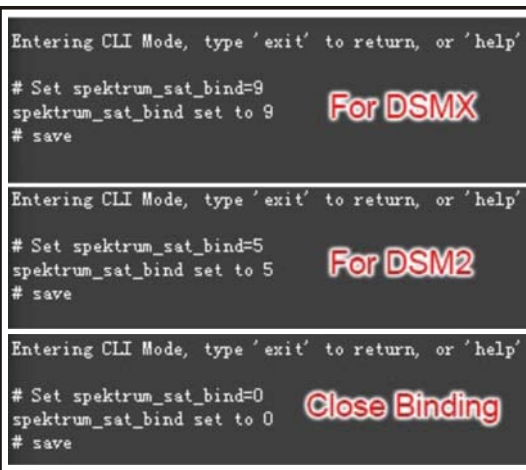
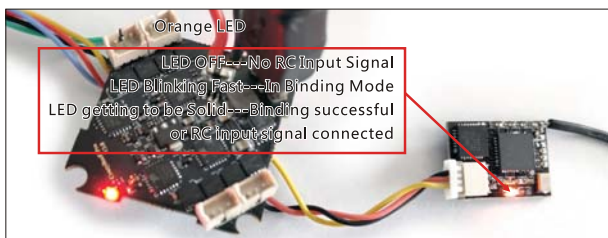
Item Name	Qty
Larva-X HD frame (with Toothpick style canopy and Whoop style canopy)	1
Whoop duct for Larva-X HD	4
SPI Receiver Option1: Crazybee F4FR V3.0 PRO FC built-in Frsky SPI D8 RX	1
SPI Receiver Option2: Crazybee F4FS V3.0 PRO FC built-in Flysky SPI RX	
Receiver Option3: Crazybee F4 V3.0 PRO FC with external DSM2/DSMX RX	
Receiver Option4: Crazybee F4 V3.0 PRO FC with external Frsky XM+ receiver	
Receiver Option5: Crazybee F4 V3.0 PRO FC with external Frsky RXSR receiver	
Receiver Option6: Crazybee F4 V3.0 PRO FC with external TBS Crossfire Nano RX	
EX1203 KV6200 brushless motors	4
Propeller sets	1
CADDX Baby turtle	1
VTX 5.8g 25mw~200mw switchable	1
3S 11.1v 450mah 75c Li-po battery	2
5.8g Micro UxII antenna	1
Propeller disassemble tool	1

Flight controller connection diagram



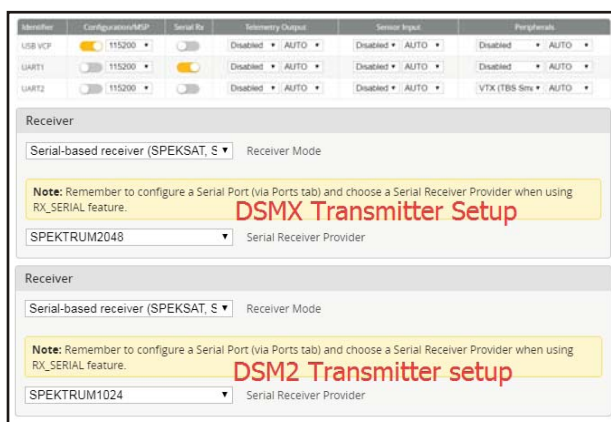
Binding procedure

- (1)Connect Crazybee F4 PRO DSM2/DSMX Version to computer and open Betaflight configurator, From CLI tab type: "set spektrum_sat_bind = 9" for DSMX radio or "set spektrum_sat_bind = 5" for DSM2 radio
- (2)Type "save" and after Flight controller reboot remove USB cable (=Power off the board)
- (3)Wait a second and reconnect the USB cable. After cold start the orange LED on the receiver should start blinking and transmitter should be turned on while pressing the bind button
- (4)After binding the orange LED on the receiver should be solid. Connect Betaflight and use receiver tab to test that satellite is working correctly.
- (5)Final step is to go to CLI tab and type "set spektrum_sat_bind = 0" and then type "save". This must be done so that satellite doesn't go back to binding mode when the flight controller is repowered again.



Receiver configuration

We have configured the DSM2/DSMX receiver for the Larva X HD before shipping. If you flashed the firmware, Please setup as the following steps: Enable Serial_RX for UART1, then select RX_SERIAL from the RECEIVER Mode and set the Serial Receiver Provider to be Spektrum1024 for DSM2 radio and Spektrum2048 for DSMX Radio in Betaflight Configurator.



Arm/Disarm the Motor

1. The Default Arm/Disarm switch for Larva X HD is AUX1(Channel 5),and you can also customize it with Betaflight Configurator.



2. For most of Spektrum radio the default channel 5 is Gear switch and you can also customize it. Use DX9 for example, Go to menu and select System setup, then choose Channel ssign.

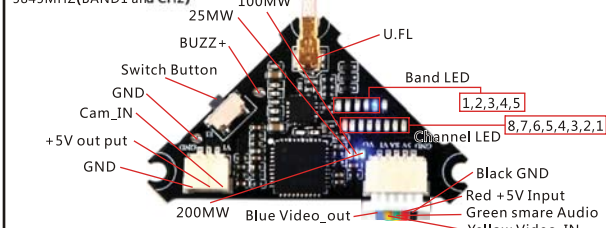


- 3.The default channel map for Larva X HD DSM2/X version is TAER1234, please make sure your transmitter is matched, otherwise it will can't be armed. Toggle the AUX1 Switch ,the Green LED on the flight controller will getting to be solid, this indicates the motor was armed . And also you can found "Armed" displayed on your FPV Goggles or the FPV Monitor. Please make sure keep the Larva X HD level before arming .Be careful and enjoy your flight now !



VTX Bands and Channels setup

Blue LED5 and Red LED8 light on, indicating frequency 5917MHZ (BAND5 and CH8)
Blue LED1 and Red LED2 light on, indicating frequency 5845MHZ (BAND1 and CH2)



Frequency and channel frequency table:

FR	CH	CH1	CH2	CH3	CH4	CH5	CH6	CH7	CH8
Band1		5865M	5845M	5825M	5805M	5785M	5765M	5745M	5725M
Band2		5733M	5752M	5771M	5790M	5809M	5828M	5847M	5866M
Band3		5705M	5685M	5665M	5665M	5885M	5905M	5905M	5905M
Band4		5740M	5760M	5780M	5800M	5820M	5840M	5860M	5880M
Band5		5658M	5695M	5732M	5769M	5806M	5843M	5880M	5917M

VTX power set

Go to Betaflight configurator CLI tab, type "set vtx_power=1" to choose 25mw, "set vtx_power=2" to choose 100mw, "set vtx_power=3" to choose 200mw, need to type "save"

There are 3 ways to switch the vtx channels:

1. Short press the switch button to choose the VTX channel, Press and hold the button for 2 seconds and release to choose the VTX band (Can't save it, it will be lost the channel while power off)
2. If we need to use Channel 5705 then we should go to Betaflight CLI, type the command: Set VTX_band=3

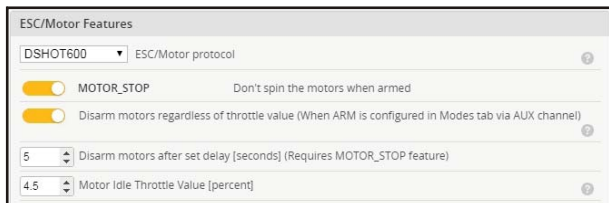
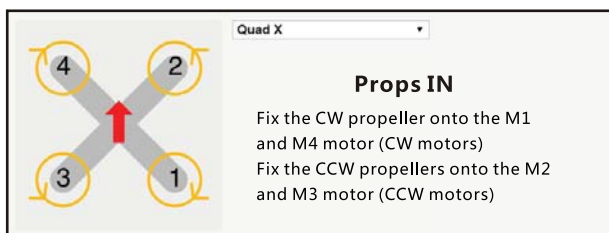
Set VTX_channel=1
save

3. Enable Smartaudio for UART2, then move the stick of the transmitter (THR MID + YAW LEFT + PITCH UP) to enter OSD Menu, Enter to Features, then enter to VTX SA to set VTX Band and channel

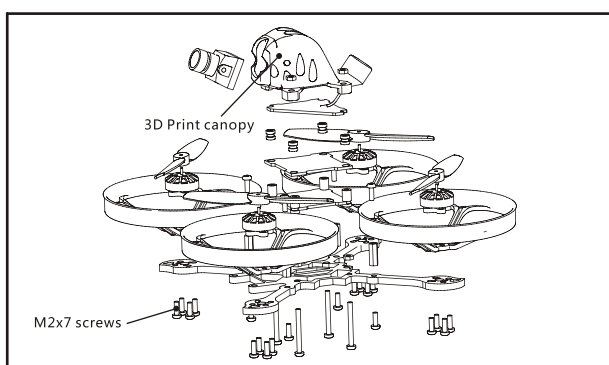
Generator	Configuration/USB	Serial ID	Telemetry Output	Serial Input	Port/Status
USB VCP	115200	Disabled	Disabled	Disabled	Disabled
UART1	115200	Disabled	Disabled	Disabled	Disabled
UART2	115200	Disabled	Disabled	Disabled	VTX (TBS Sm) AUTO



Mixer type and ESC/motor protocol



Whoop mode assemble



Default PID setting

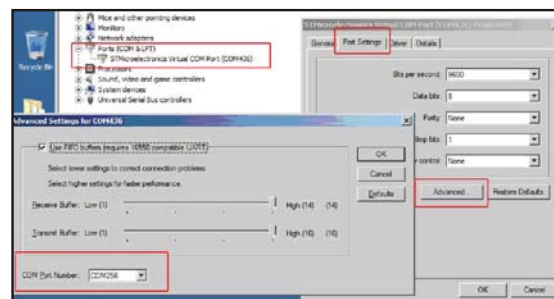
PID Settings	Proportional	Integral	Derivative	Feedforward	RC Rate	Super Rate	Max Vel [deg/s]	RC Expo
Roll	42	60	40	70	1.00	0.70	667	0.10
Pitch	46	70	38	75	1.00	0.70	667	0.10
Yaw	60	70	0	0	1.00	0.70	667	0.00

ESC Check and Flash firmware

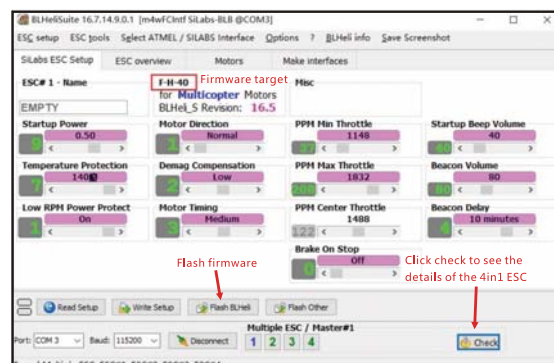
1. Download New release BLHeliSuite from:
<https://www.mediafire.com/folder/dx6ktaasyo241/BLHeliSuite>
2. Plug the usb and connect the flight controller to computer



3. Open the Device Manager of your computer, find the Ports, please make sure the Com port Serial Number is under 255, otherwise it will can't connect to the BLHELISUITE. You can change the port serial number like the following step:



4. Open the BLHELISUITE, Select SILABS BLHeli Bootloader (Cleanflight) from the third tab on the top side. Then Select the right Serial com port and Click connect. You can also Flash the new release BLHeli_s firmware via the BLHELISUITE, the firmware Target is "F-H-40"



Flight controller firmware update

1. Install latest STM32 Virtual COM Port Driver
<http://www.st.com/web/en/catalog/tools/PF257938>
2. Install STM BOOTLOAD Driver (STM Device in DFU MODE)
3. Open Betaflight configurator and choose firmware target "CrazybeeF4DX", then select the firmware version.
4. There are 2 ways to get in DFU Mode: 1). solder the boot pad and then plug USB to computer 2). loading betafight firmware and hit "flash", then it will get into DFU Mode automatically.
5. Open Zadig tools to replace the drivers from STM32 Bootloader to WINUSB Driver.
6. Reconnect the flight controller to the computer after replace driver done, and open Betaflight Configurator, loading firmware and flash.

