



### VTX Bands and Channels setup

Frequency and channel frequency table:

FR \ CH	CH1	CH2	CH3	CH4	CH5	CH6	CH7	CH8
Band1(A)	5865M	5845M	5825M	5805M	5785M	5765M	5745M	5725M
Band2(B)	5733M	5752M	5771M	5790M	5809M	5828M	5847M	5866M
Band3(E)	5705M	5685M	5665M	5665M	5885M	5905M	5905M	5905M
Band4(F)	5740M	5760M	5780M	5800M	5820M	5840M	5860M	5880M
Band5(R)	5658M	5695M	5732M	5769M	5806M	5843M	5880M	5917M

There are 2 ways to switch the vtx channels:

1.If we need to use Channel 5705 then we should Go to Betaflight CLI,type the command:

Set VTX\_band=3

Set VTX\_channel=1

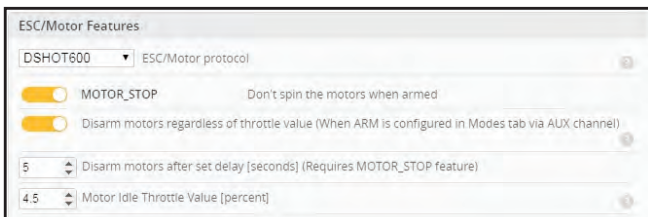
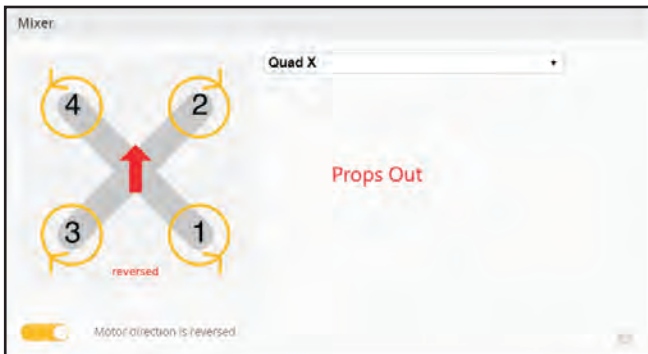
save

2.Disarm the Mobula6 HD and then move the stick of the transmitter(THR MID+YAW LEFT+PITCH UP) to enter OSD Menu,Enter to Features,then enter to VTX SA to set VTX Band and channel

Identifier	Configuration/MSP	Serial ID#	Telemetry Output	Sensor Input	Peripherals
USB VCP	115200	Disabled	AUTO	Disabled	AUTO
UART1	115200	Disabled	AUTO	Disabled	AUTO
UART2	115200	Disabled	AUTO	Disabled	TBS SmartAux



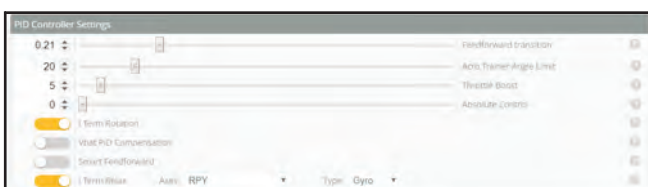
### Mixer type and ESC/motor protocol



### Default PID setting

Betaflight 3.5.7 Default PID settings:

Profile	Proportional	Integral	Derivative	Feedforward	RC Rate	Super Rate	Max Vel (cm/s)	RC Expo
RCALL	85	100	85	140	1.00	0.70	662	0.00
FLYCH	80	100	85	140	1.00	0.70	662	0.00
RCAL	120	100	0	140	1.00	0.70	662	0.00



Note: "ESC Check and flash firmware" and "Flight controller firmware update" procedure are not necessary. The procedure at the right side is just a tutorial to show how to do it. We already pre-install firmware and pre-configure the ESC and the flight controller.

### ESC Check and Flash firmware

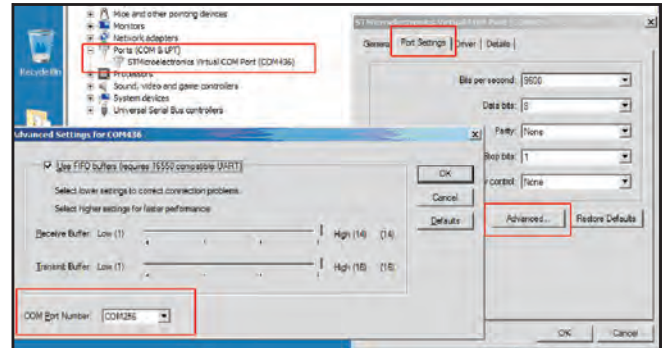
1.Download New release BLhelisuite from:

<https://www.mediafire.com/folder/dx6kfaa5yo24i/BLHeliSuite>

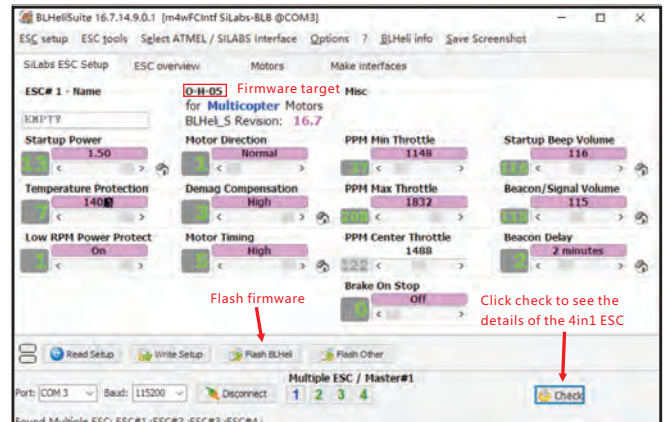
2.Plug the usb and connect the flight controller to computer



3.Open the Device Manager of your computer, find the Ports, please make sure the Com port Serial Number is under 255, otherwise it will can't connect to the BLHELISUITE. You can change the port serial number like the following step:



4.Open the BLHELISUITE, Select SILABS BLHeli Bootloader (Cleanflight) from the third tab on the top side. Then Select the right Serial com port and Click connect. You can also Flash the new release BLHeli\_s firmware via the BLHELISUITE, the firmware Target is "O-H-05"



### Flight controller firmware update

1.Install latest STM32 Virtual COM Port Driver

<http://www.st.com/web/en/catalog/tools/PF257938>

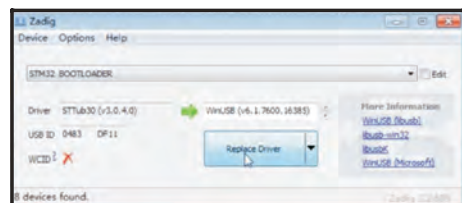
2.Install STM BOOTLOAD Driver (STM Device in DFU MODE)

3.Open Betaflight configurator and choose firmware target "CRAZYBEEF4F5(LEGACY)", then select the firmware version.

4.There are 2 ways to get in DFU Mode: 1). solder the boot pad and then plug USB to computer 2). loading betaflight firmware and hit "flash", then it will get into DFU Mode automatically.

5.Open Zadig tools to replace the drivers from STM32 Bootloader to WINUSB Driver.

6.Reconnect the flight controller to the computer after replace driver done, and open Betaflight Configurator, loading firmware and flash.



### "Flip over after crash" procedure

Set one channel of your radio transmitter to activate the Flip over function in the Mode tab of Betaflight configurator.

The default Switch for Activate "Flip" is AUX4(Channel8)

